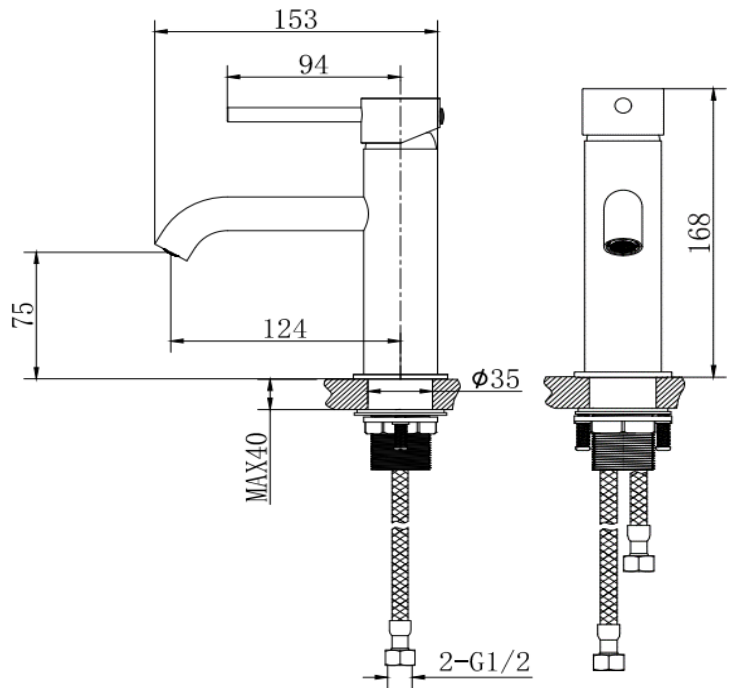


TECHNICAL DATA SHEET

G05 Basin Mono Mixer (inc. G1¼" Sprung Waste)

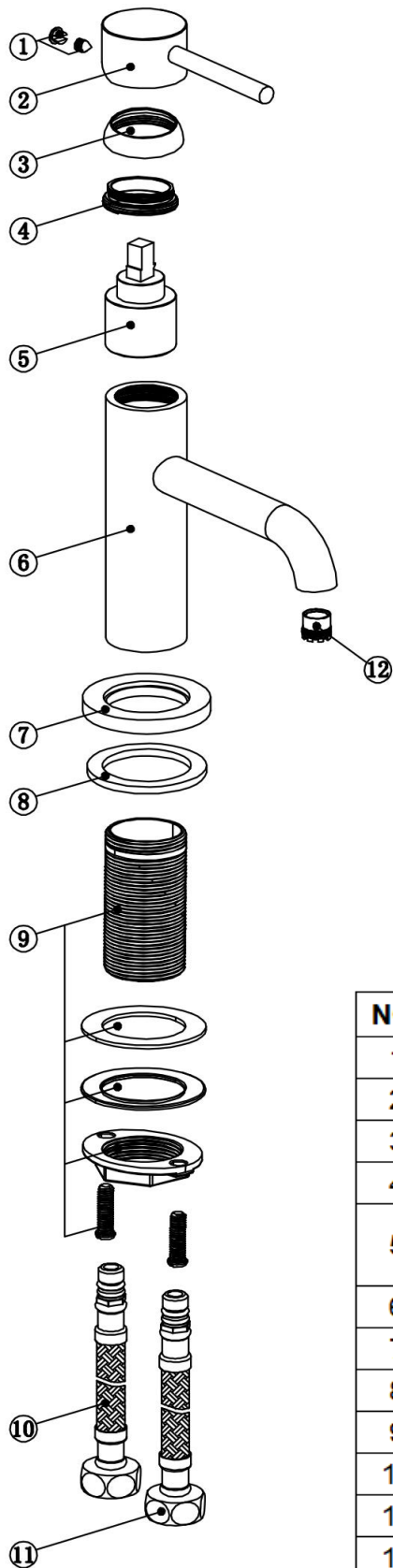
Barcode	7081245489280
Product Code	G05
Construction	Brass Body (CuZn40Pb2), EN CW617N (equivalent to BS CZ122); Zinc-alloy Handle
Finishes	Chrome (Ni : 8-12um, Cr : 0.25-0.3um)
Product Type	Contemporary
Water Pressure	Min. 0.5 bar, Max. 6.0 bar
Plumbing Systems	Suitable for all plumbing systems, Hot and Cold water pressure preferably balanced Max. supply pressure differential requirement no greater than 5:1
Standards	Complies with BS6920, BS EN200
Certification	-
Cartridge	CITEC 35mm 110° Turn Cold Start Ceramic disc cartridge
Aerator	Neoperl Slim Aerator
Fitting	UK: M10 x 350mm G½" BSP Female Flexi Tails EU: M10 x 350mm G3/8" BSP Female Flexi Tails
Packaging	46 x 28 x 34cm / carton (8 boxes), Dimension: 27 x 22 x 8cm / box; Weight: 1.44Kg / box
Guarantee	10 years against manufacturing faults (excluding serviceable parts)
Additional Information	Supplied with G1¼" sprung waste (UK only)



Flow Rates (Litres per minute)

System Pressure	0.1 Bar	0.2 Bar	0.3 Bar	0.5 Bar	1.0 Bar	1.5 Bar	2.0 Bar	3.0 Bar	4.0 Bar	5.0 Bar
G05	-	-	-	4.6	6.0	-	8.3	10.2	-	-

All dimensions are in millimetres unless otherwise stated. The information contained on this page was correct at date of issue. Fitting dimensions are provided as a guide only. Some variation may occur due to manufacturing tolerances. We pursue a policy of continuing improvement in design and performance of our products and so reserve the right to change specifications without prior notice.



G05

NO.	ITEM	QTY
1	GRUB SCREW & COVER CAP	1
2	ZINC-ALLOY HANDLE	1
3	HANDLE COLLAR	1
4	BRASS CARTRIDGE NUT	1
5	35MM CITEC COLD-START CERAMIC DISC CARTRIDGE	1
6	BRASS TAP BODY	1
7	BASE PLATE	1
8	BASE PLATE WASHER	1
9	BRASS TAP FIXING SET	1
10	G1/2" BSP FLEXI-TAIL (HOT)	1
11	G1/2" BSP FLEXI-TAIL (COLD)	1
12	AERATOR	1